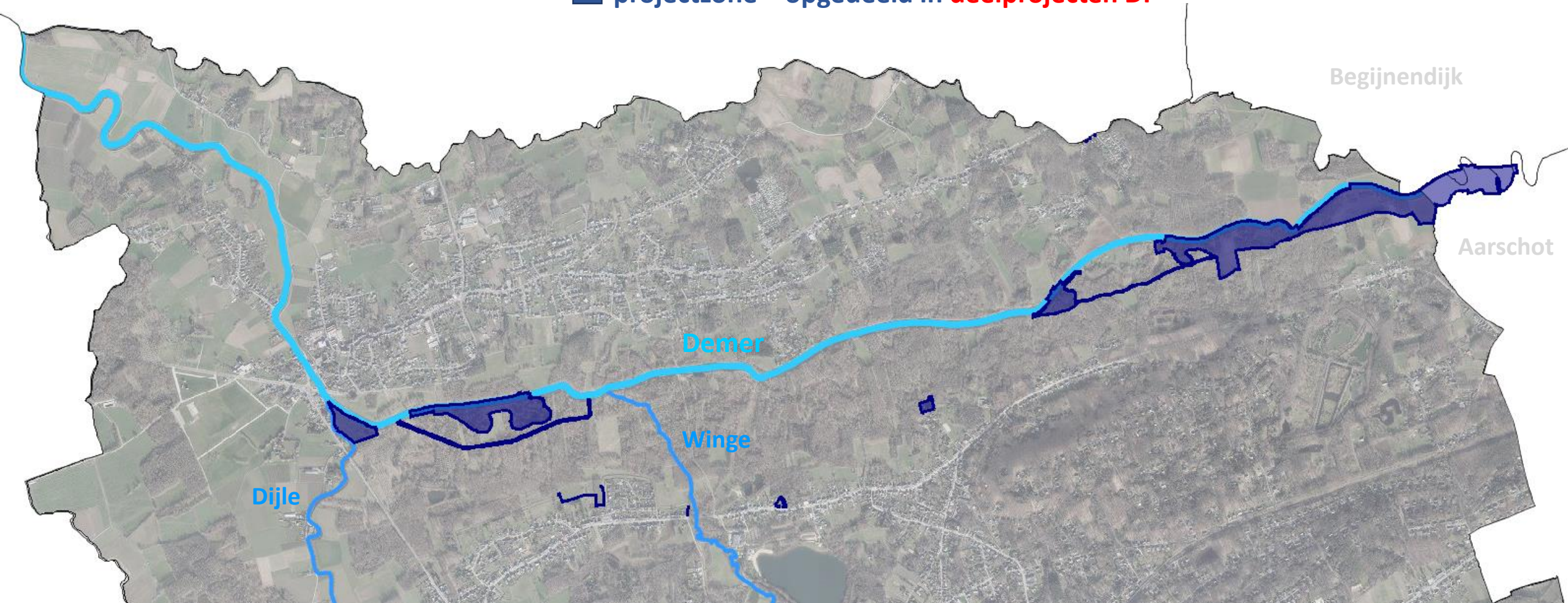


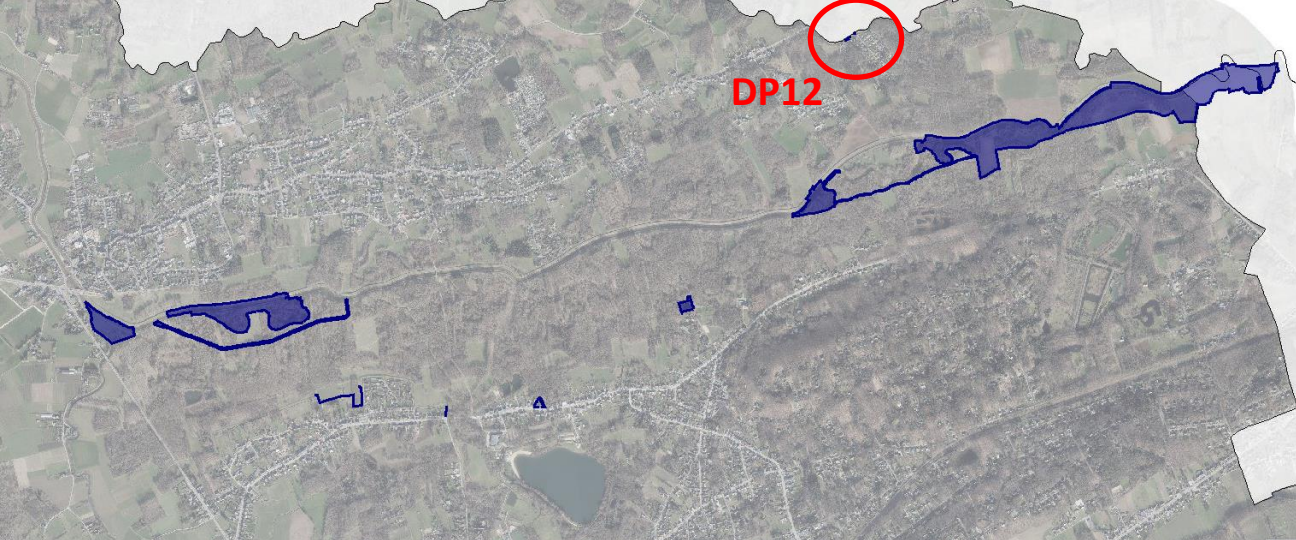
OMV_2022087958 - Sigmaplan Demervallei – deelgebied 6 - Demermeanders

■ projectzone – opgedeeld in **deelprojecten DP**



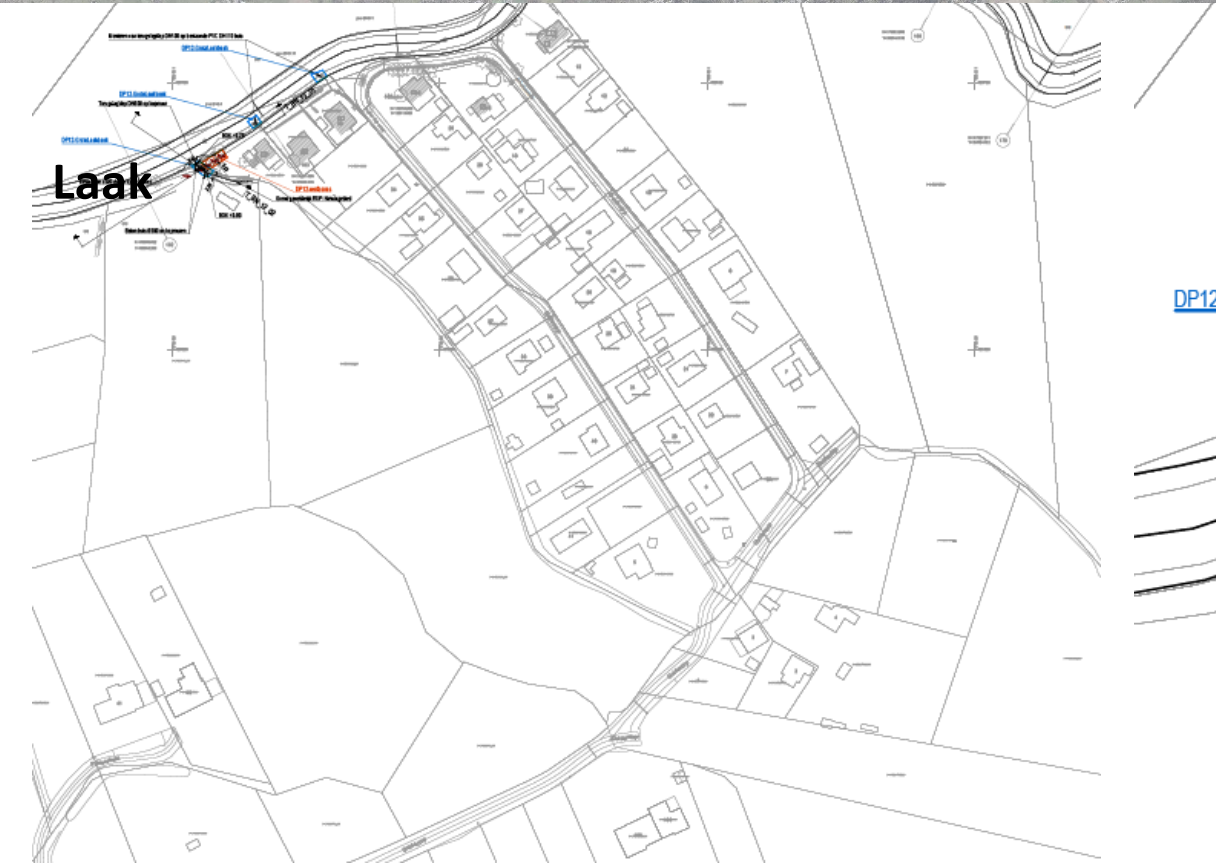
Openbaar onderzoek van 19 oktober tot en met 17 nov 2023

Volledige omgevingsvergunningsaanvraag: <https://omgevingsloketinzage.omgeving.vlaanderen.be/2022087958/inhoud-aanvraag>

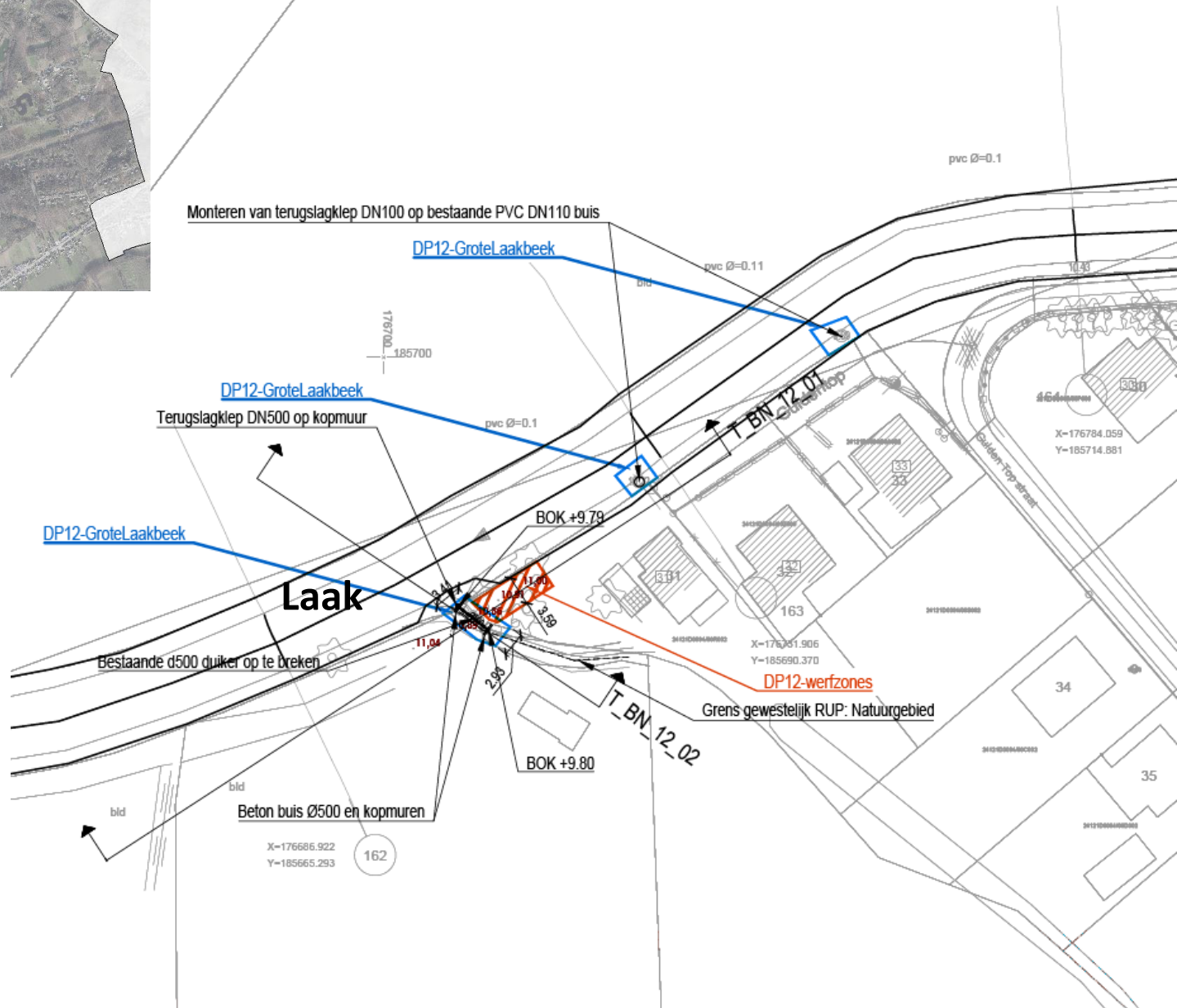


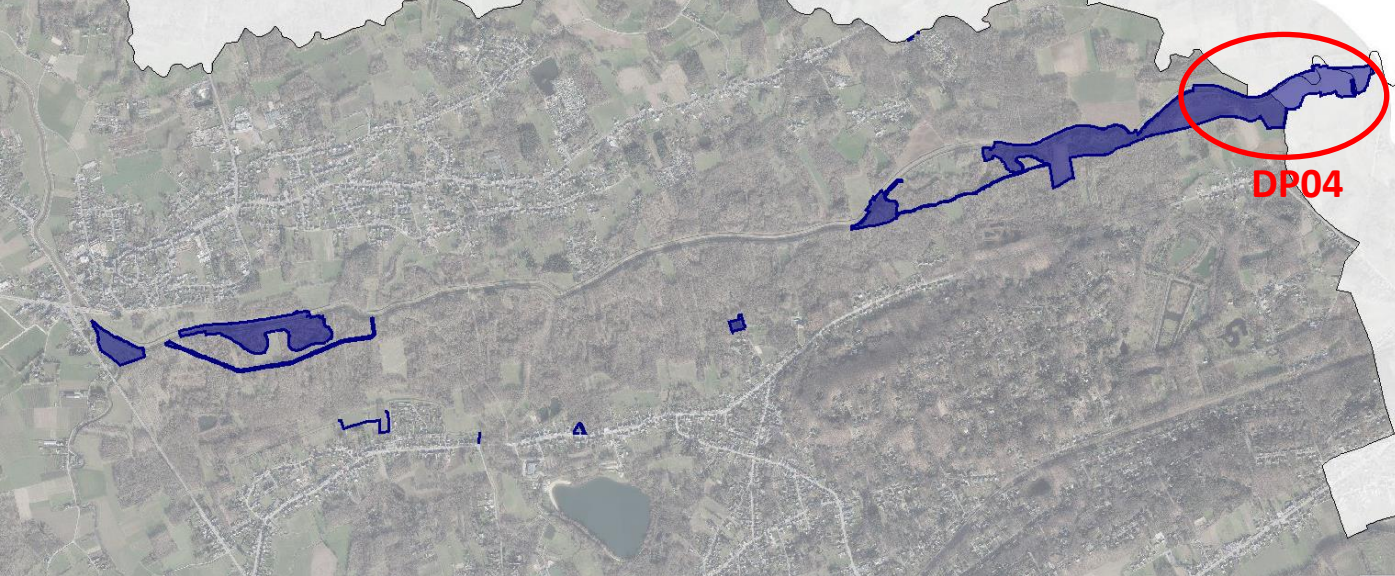
DP12

DP12 nieuwe kopmuren en terugslagkleppen grachten in de Laak - wijk Guldentop

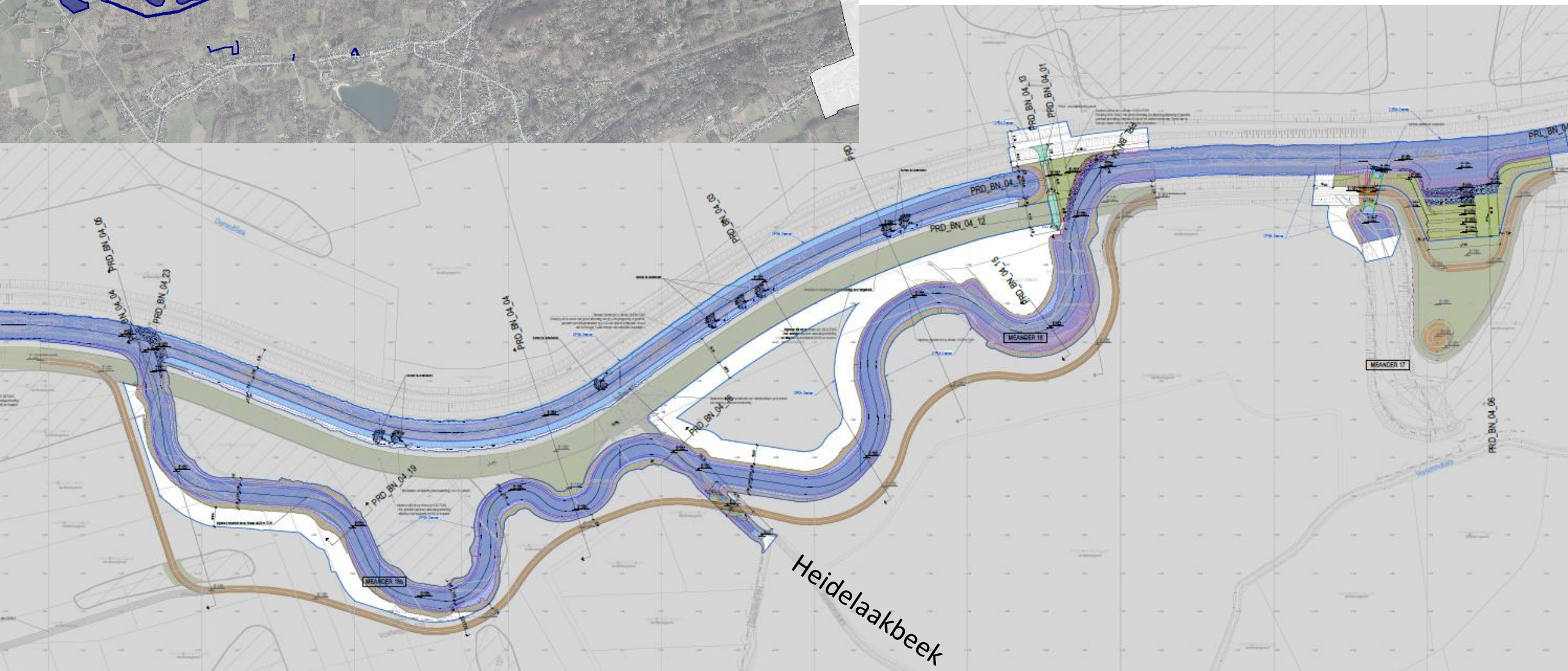


Laak

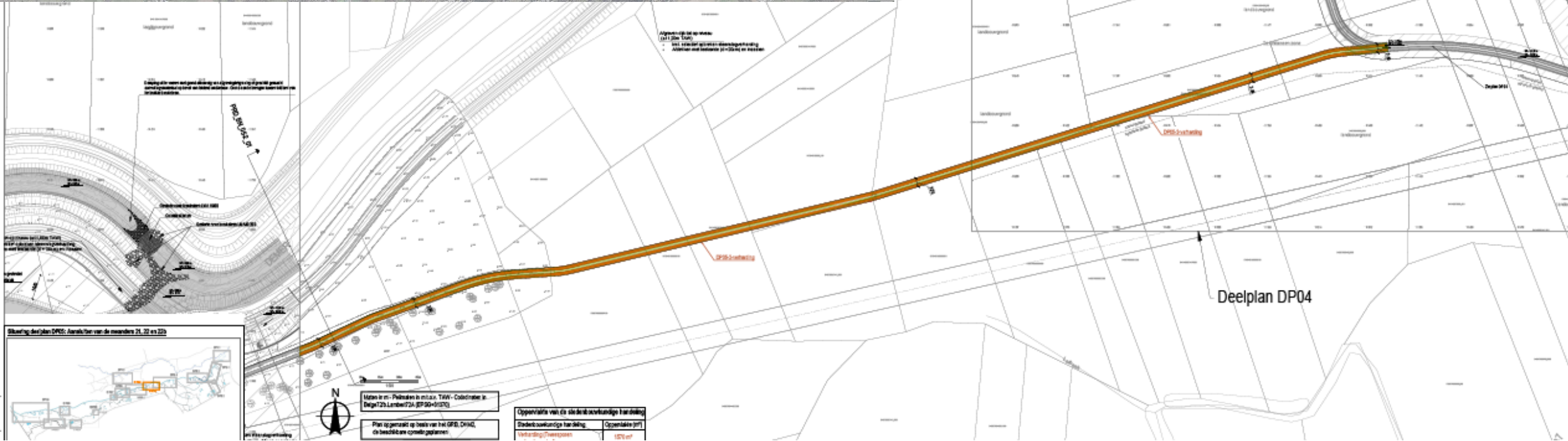
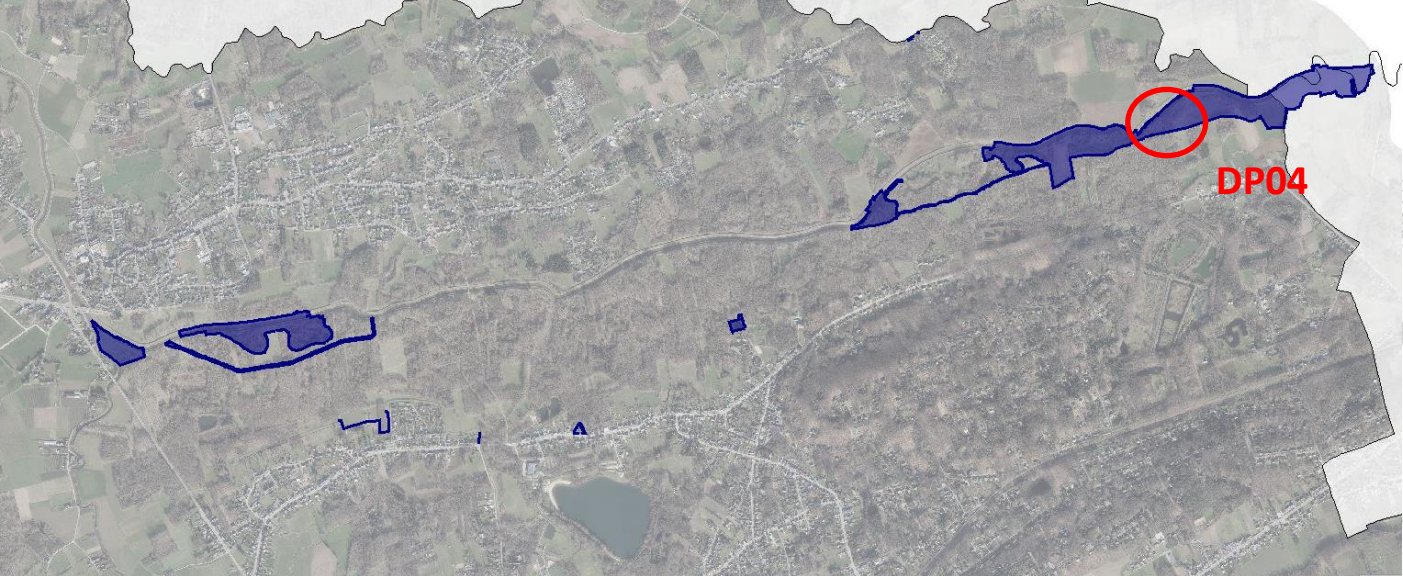




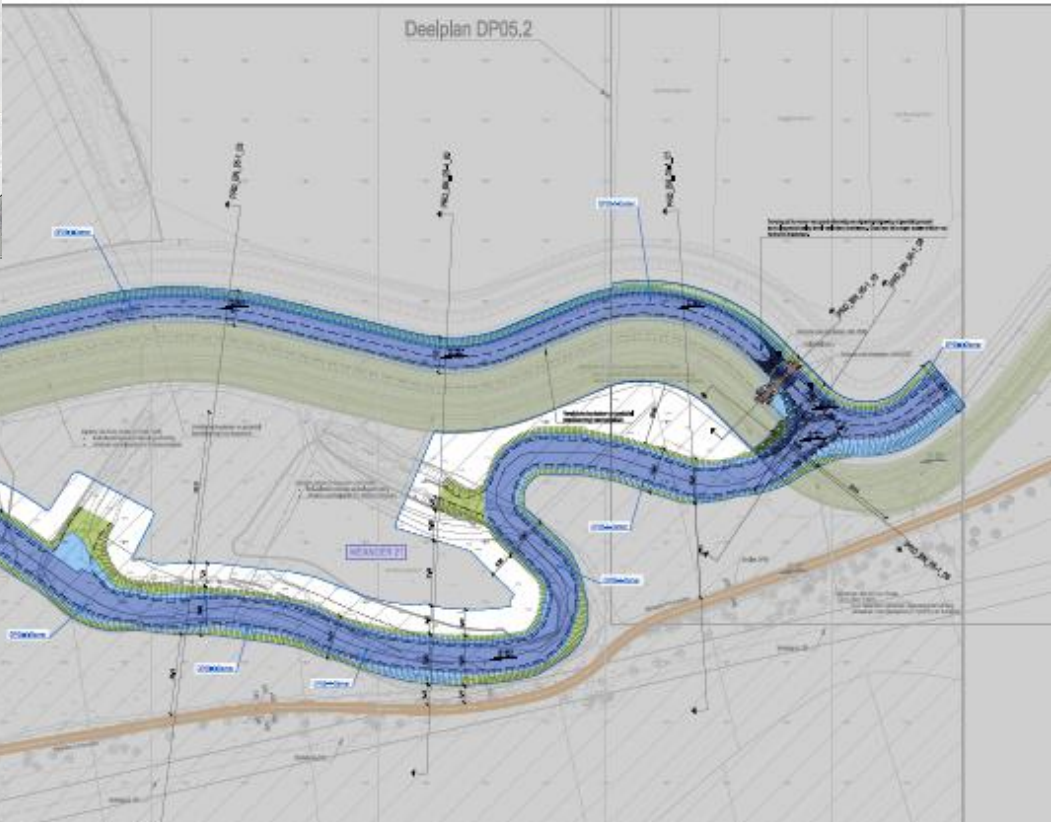
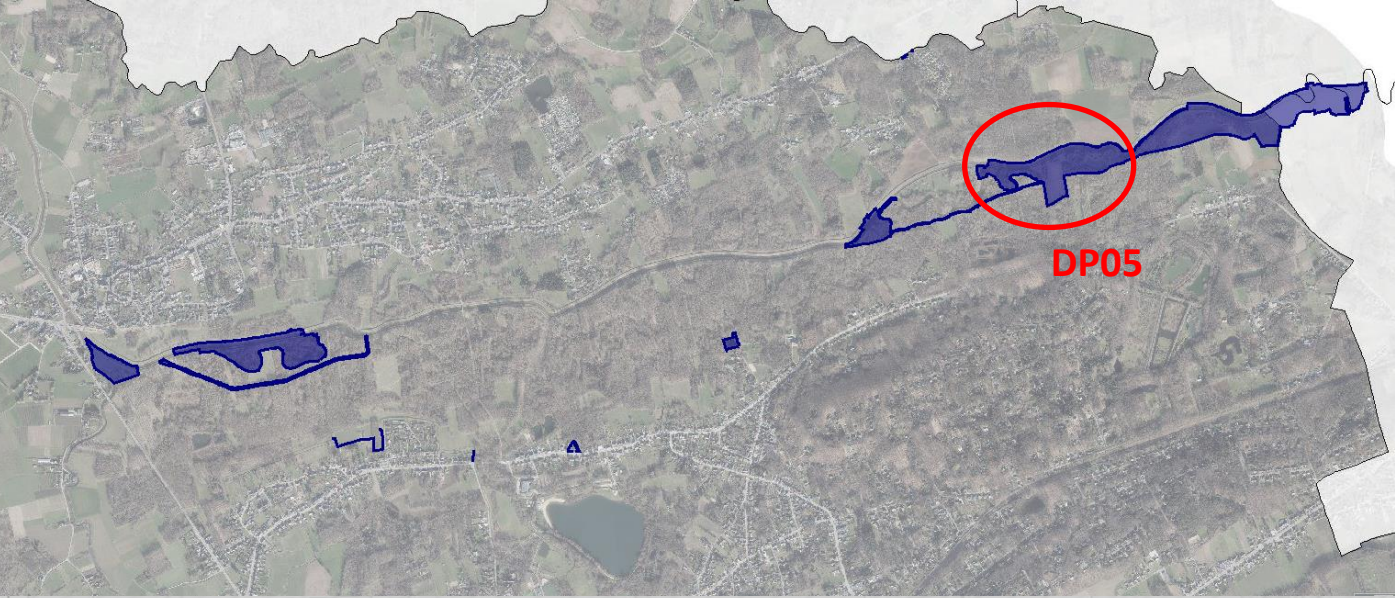
**DP04 aansluiten meander Heidelaakbeek +
aanleggen wandelpad / dienstweg**



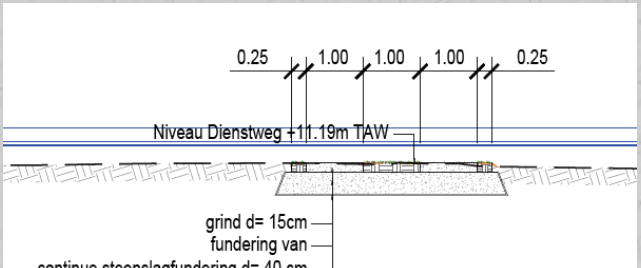
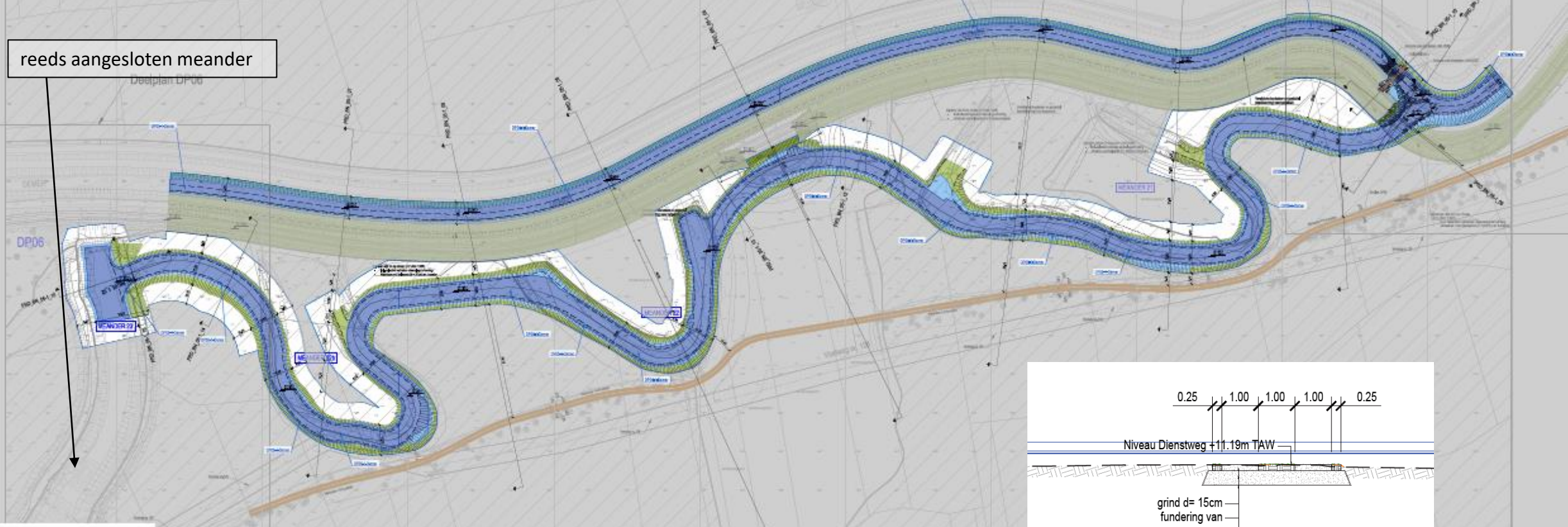
DP04 aanleggen wandelpad/dienstweg



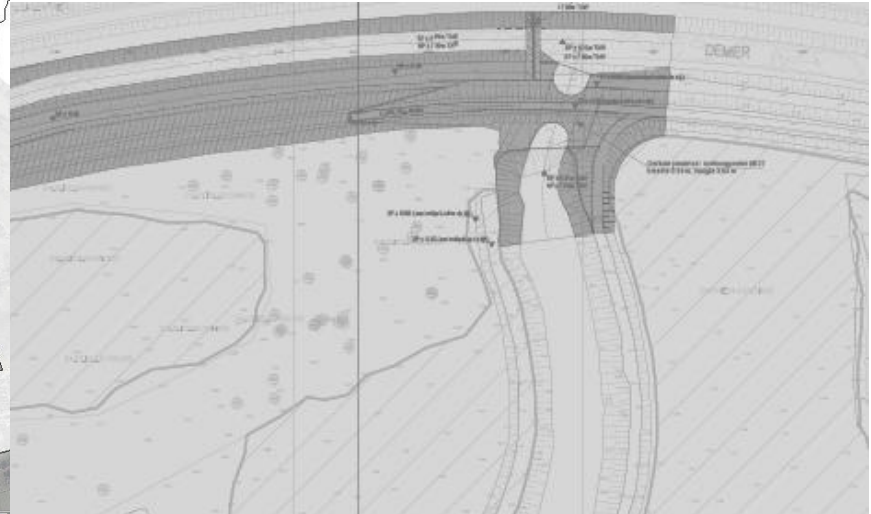
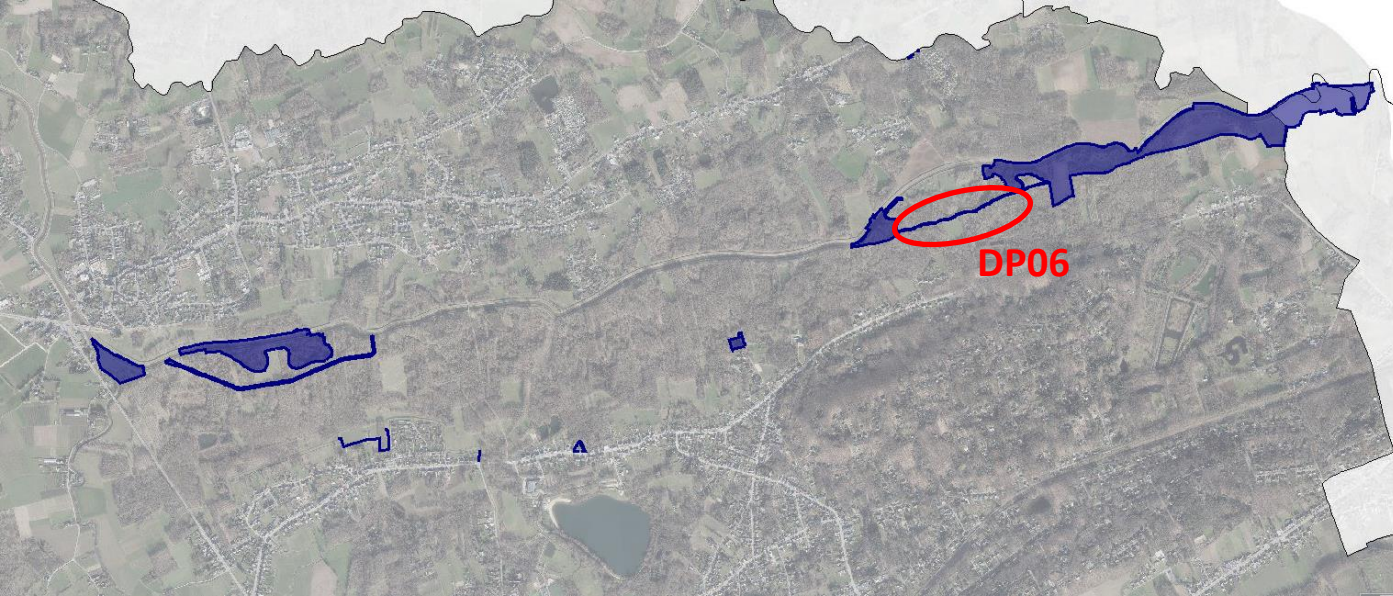
DP05 aansluiten meander + aanleggen wandelpad/dienstweg



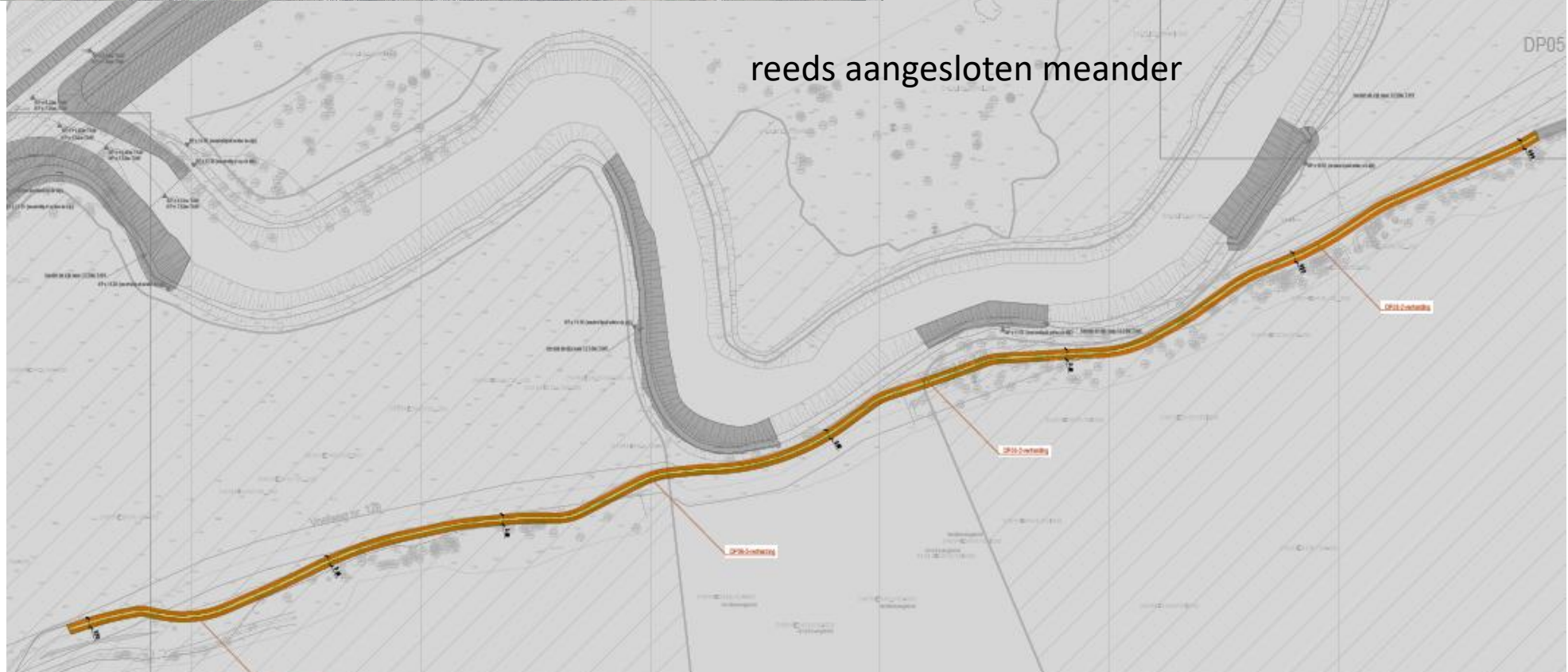
reeds aangesloten meander



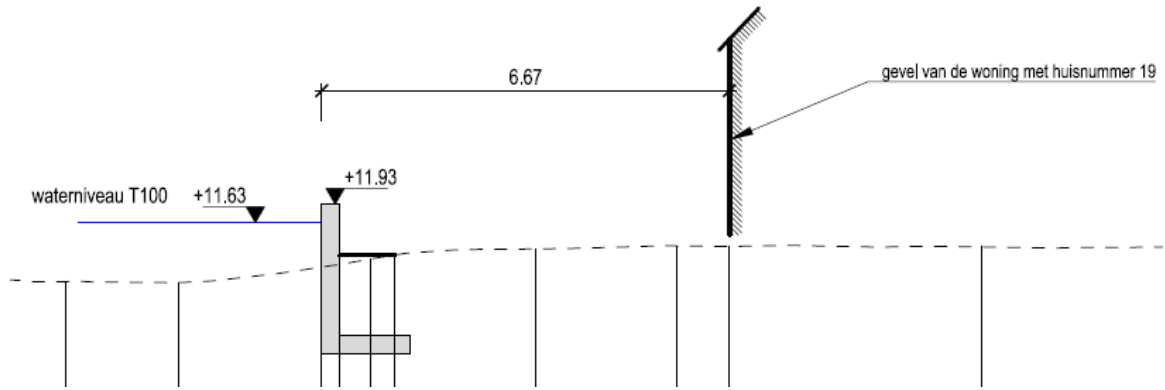
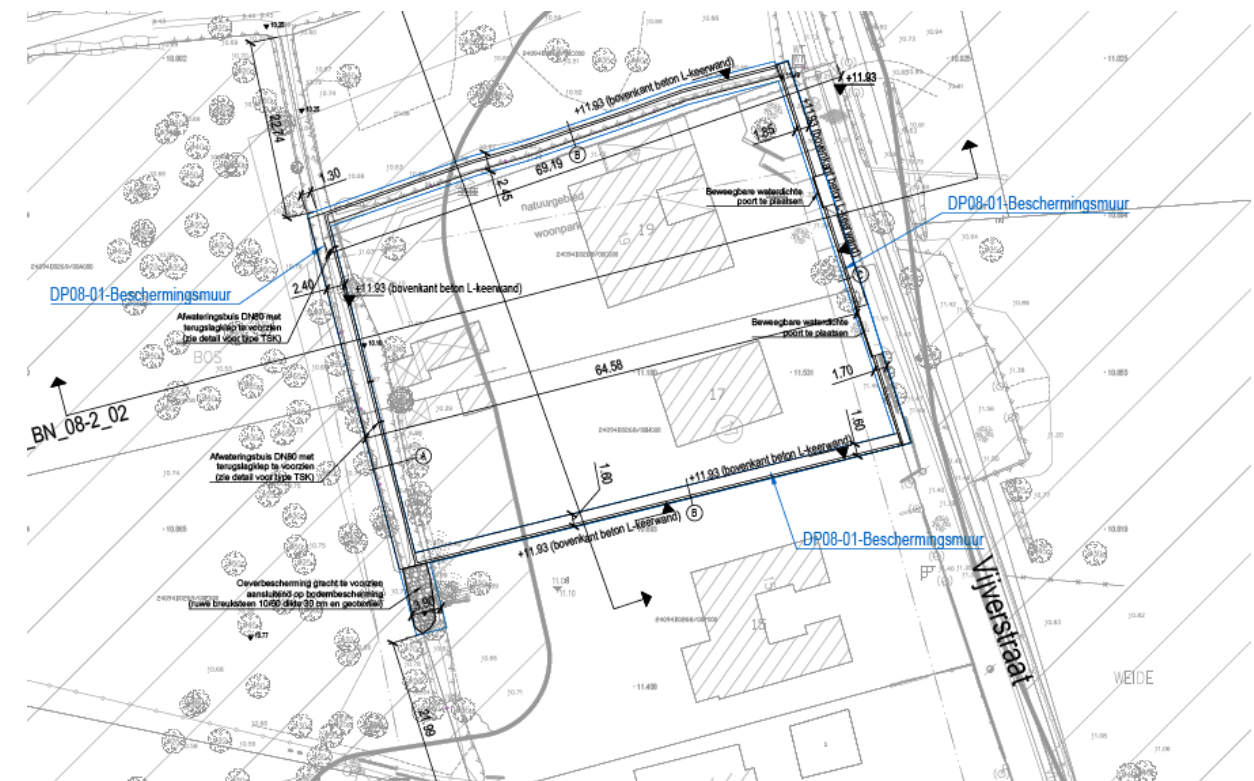
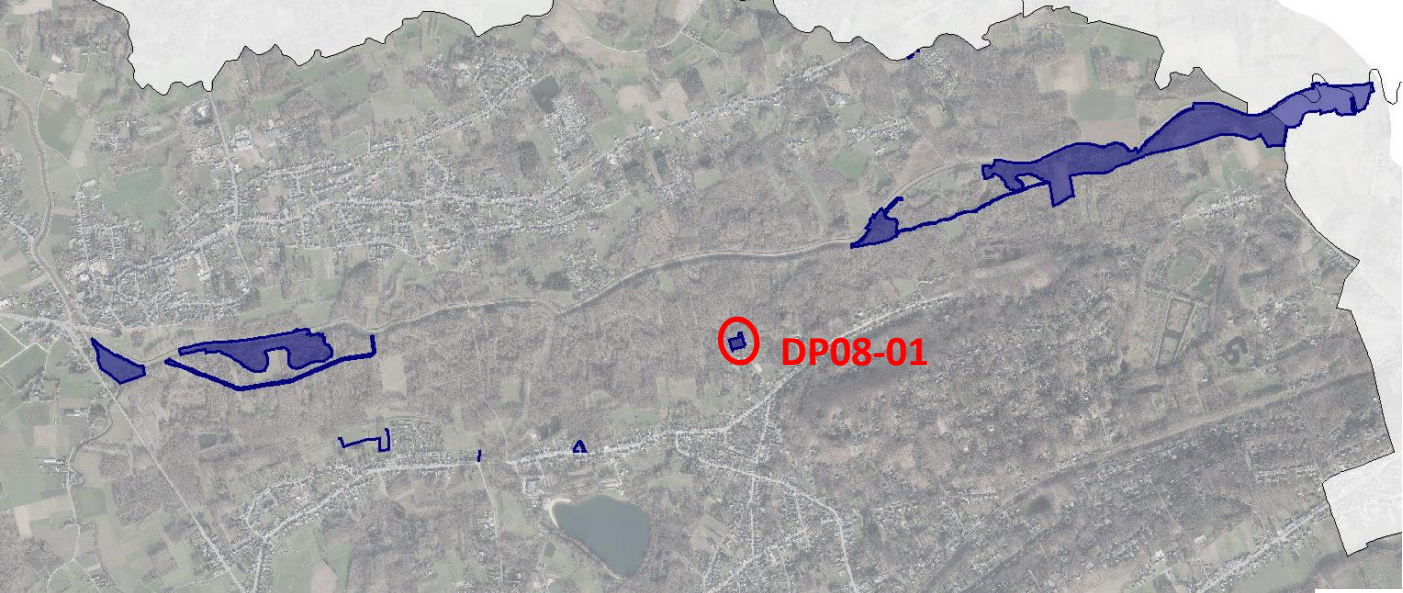
DP06 aanleggen wandelpad/dienstweg



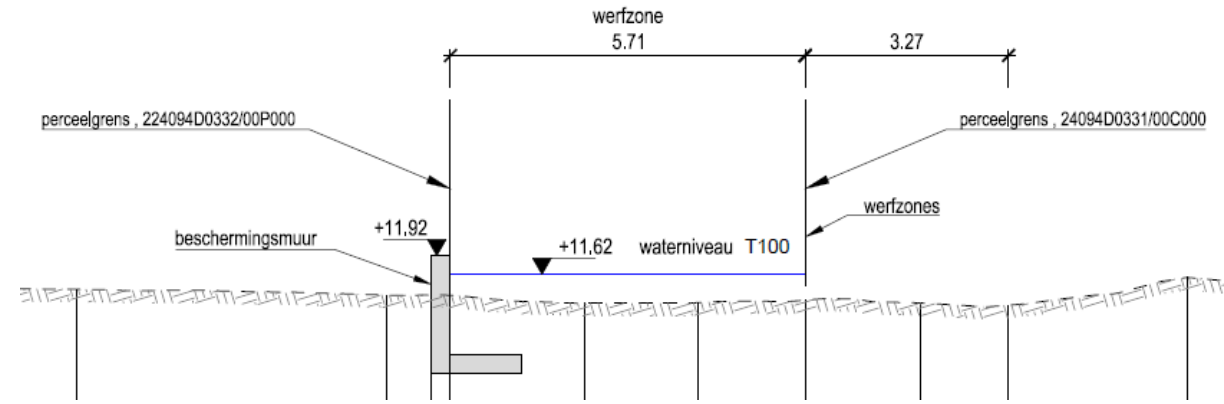
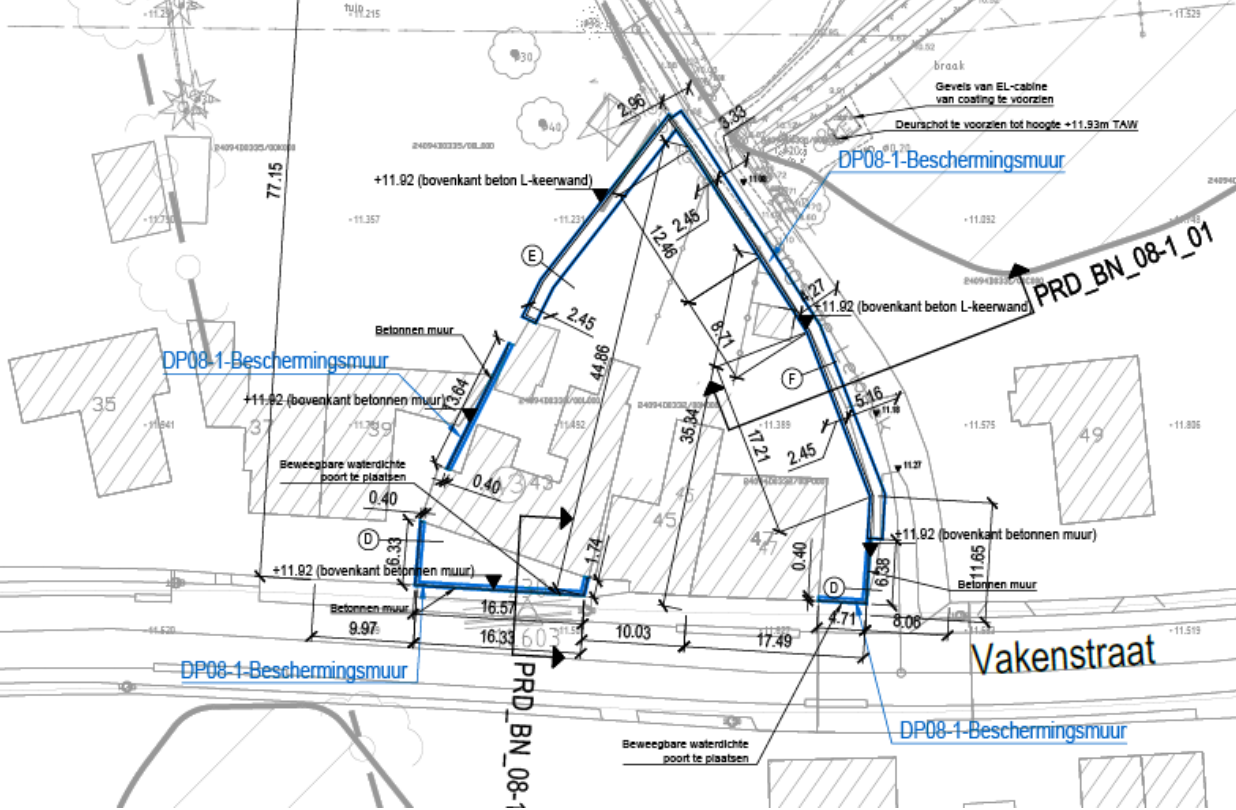
reeds aangesloten meander



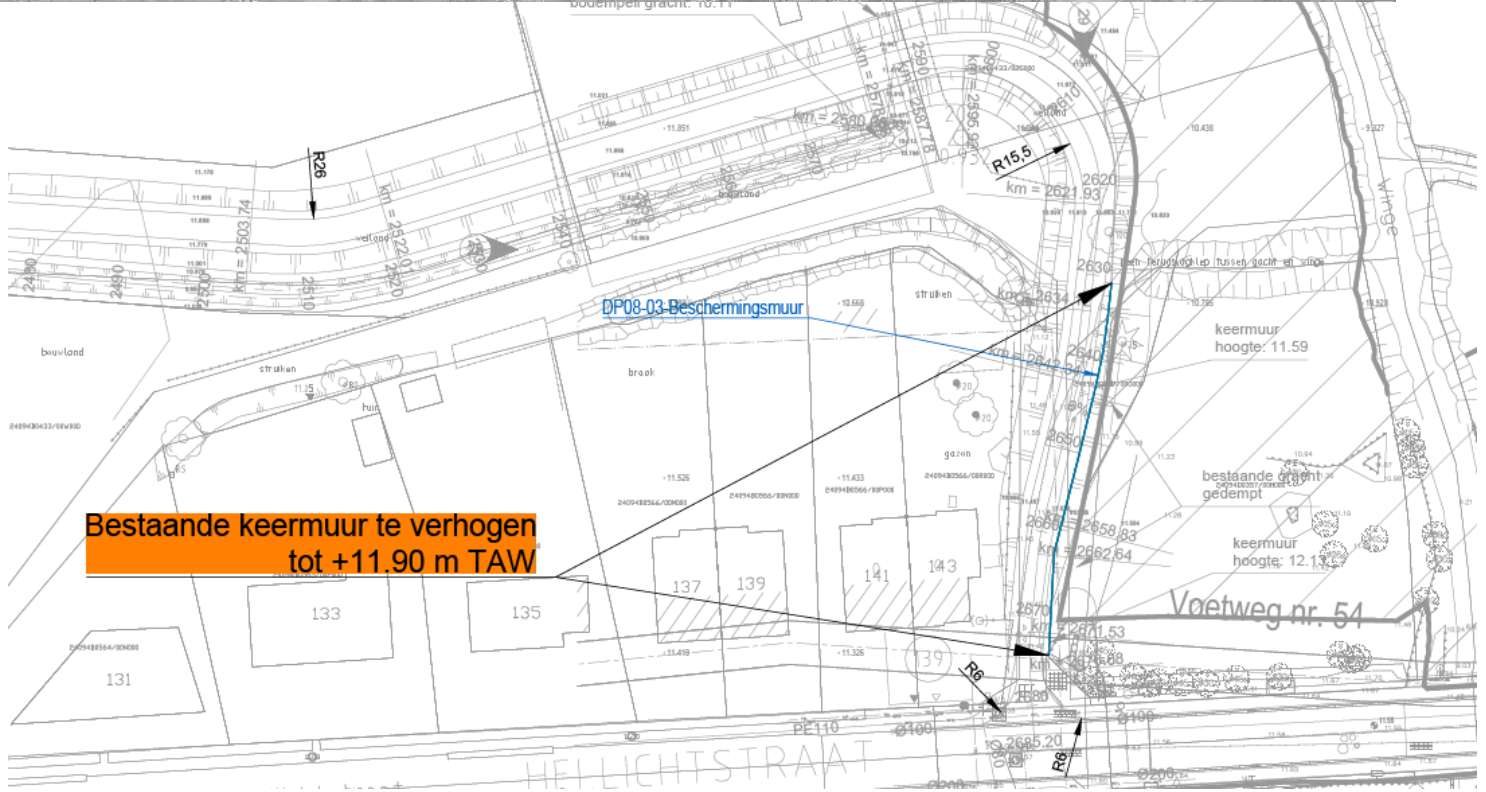
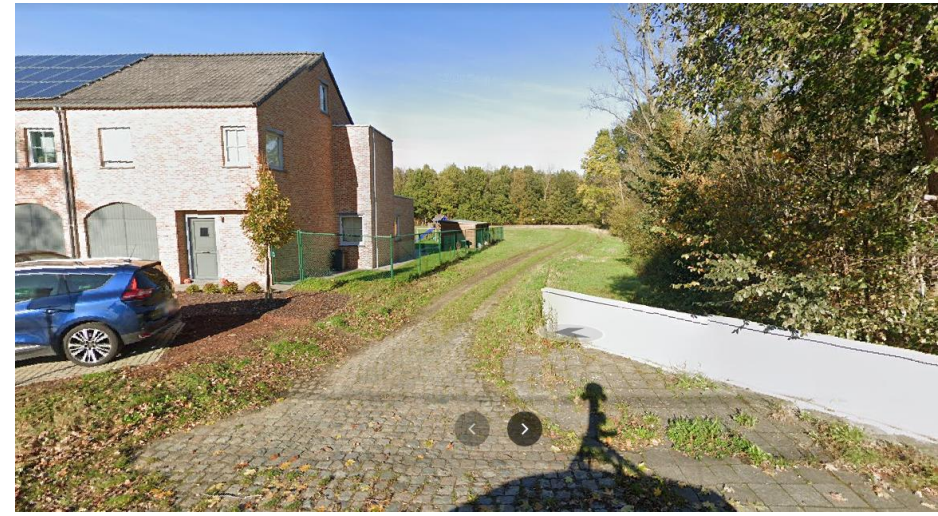
DP08-01 beschermingsmaatregelen Vijverstraat 17 en 19

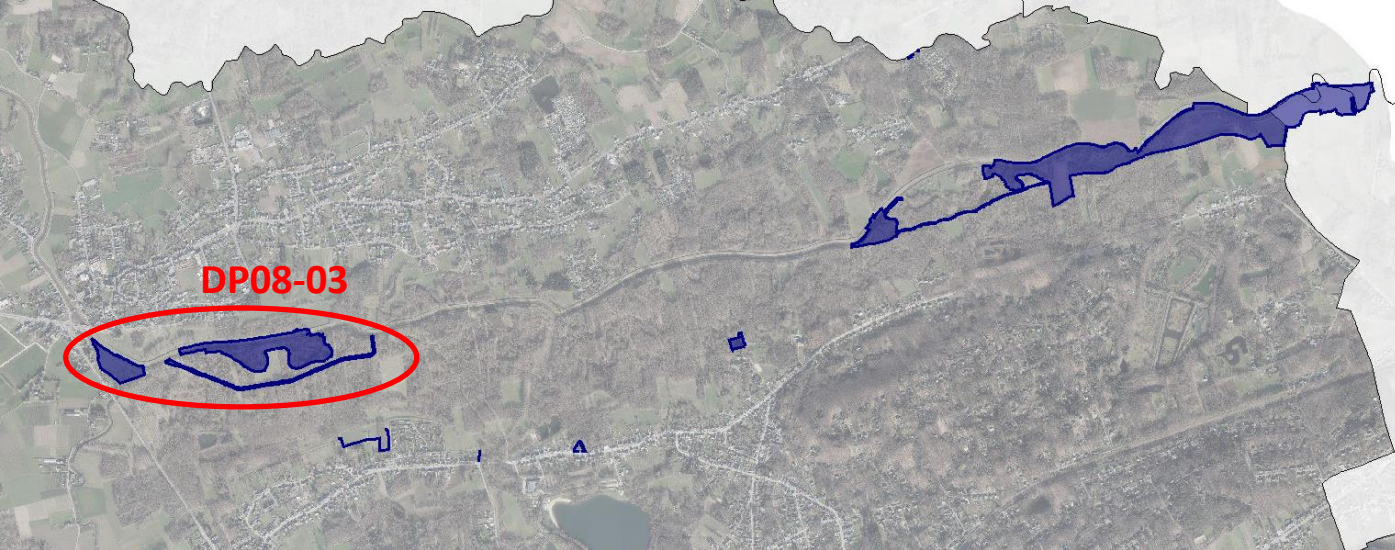


DP08-02 beschermingsmaatregelen Vakenstraat 43-45-47



DP08-03 keermuur naast Hellichtstraat 143





**DP10 aansluiting meander Broekstraat
+ bres + aanleggen wandelpad**

